

# SARS-ANI VIS

The Interactive Visual Stories of  
Reported SARS-CoV-2 Events in Animals

687

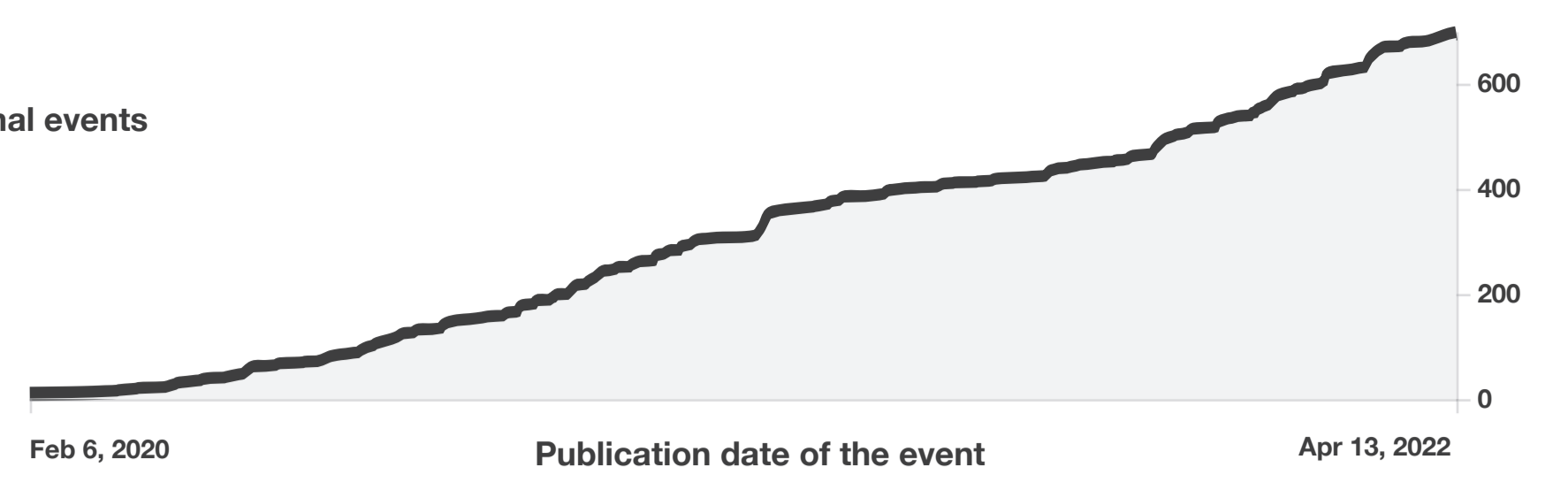
SARS-CoV-2 animal events

38

countries

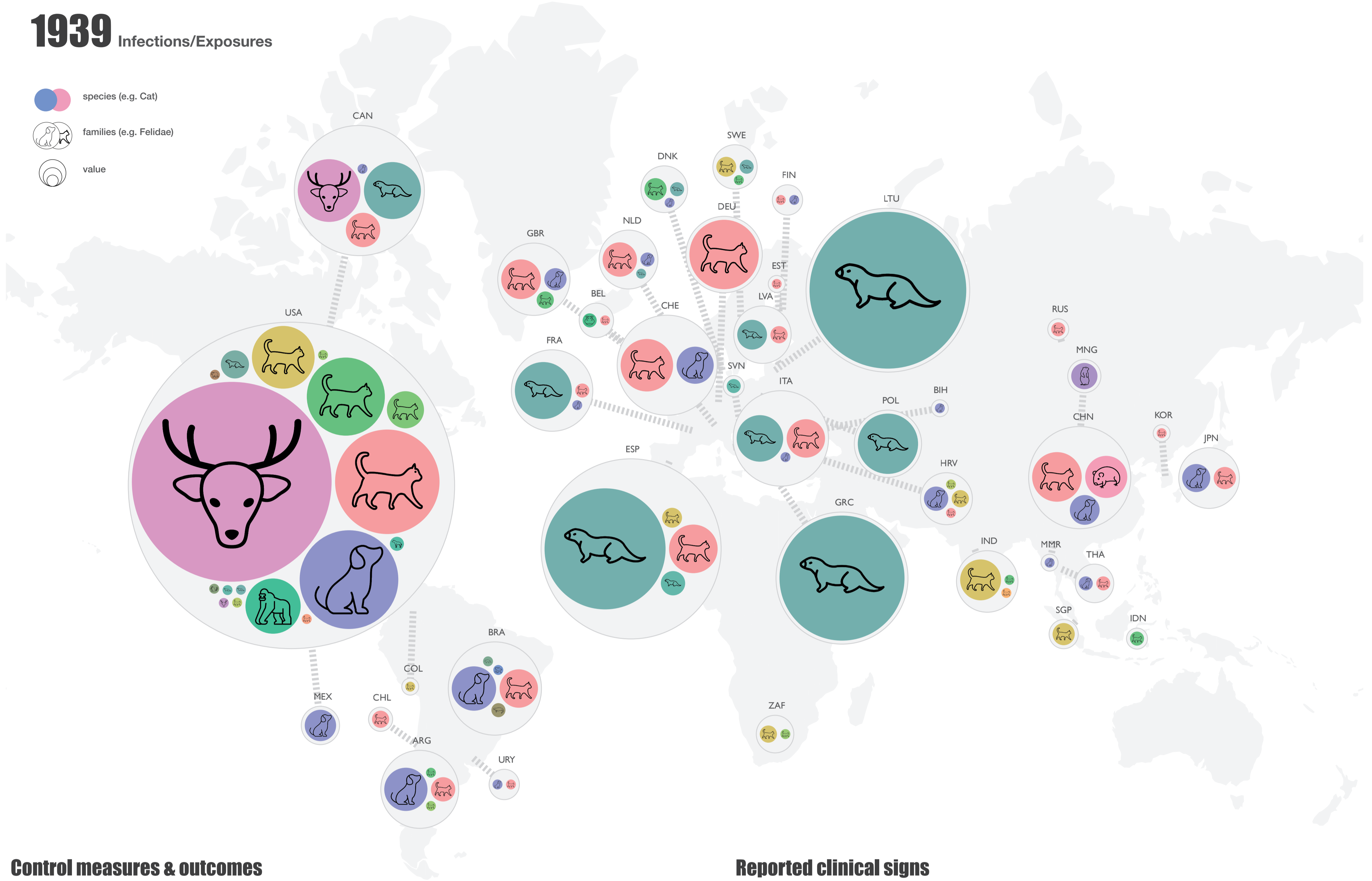
24

animal species

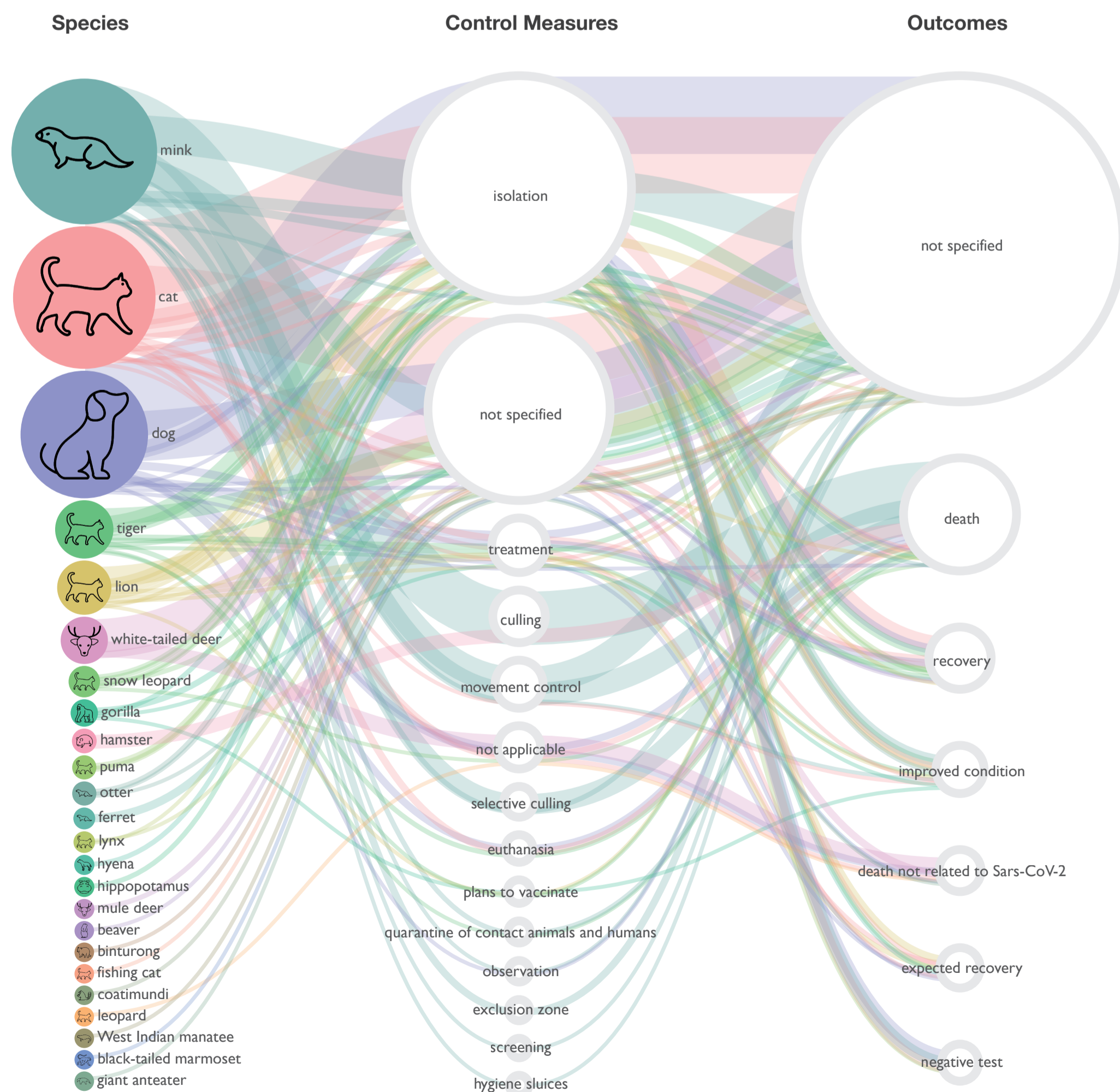


## 1939 Infections/Exposures

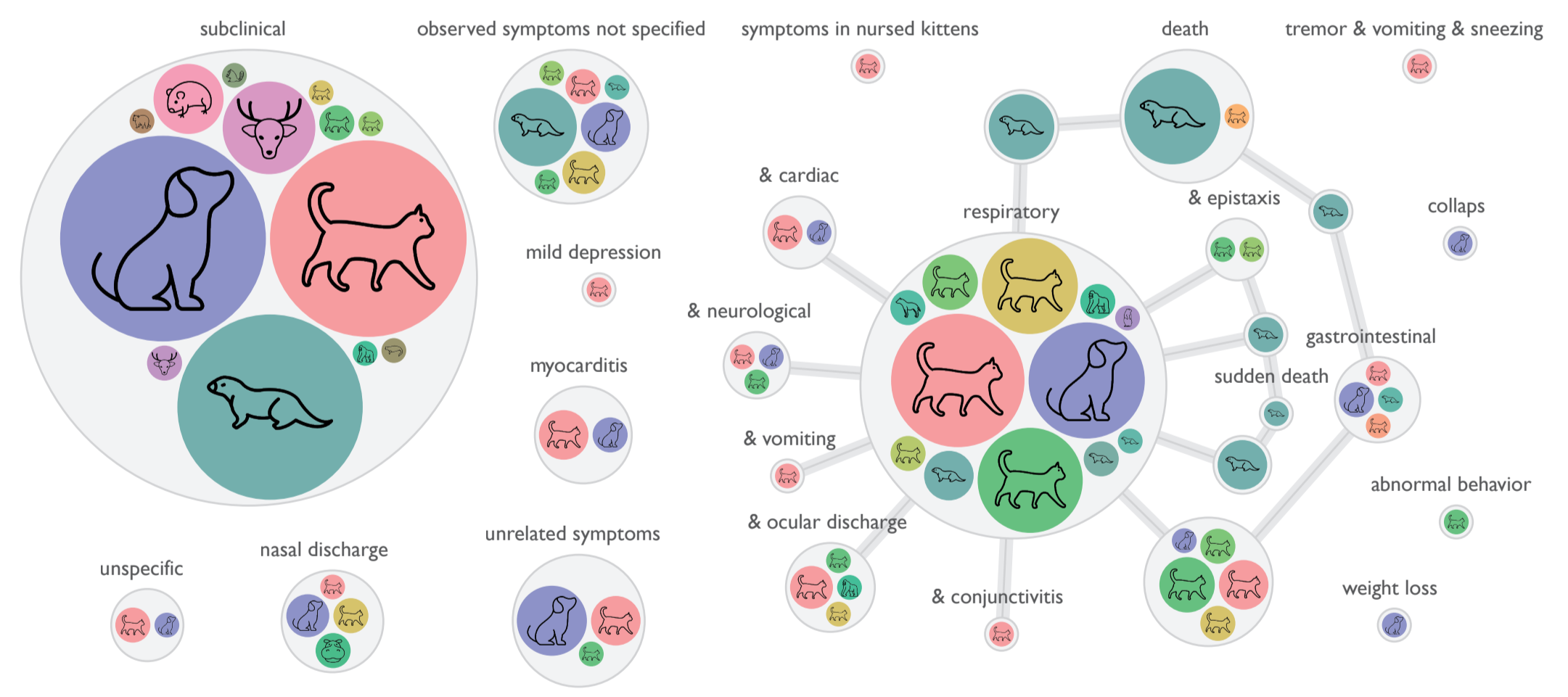
- species (e.g. Cat)
- families (e.g. Felidae)
- value



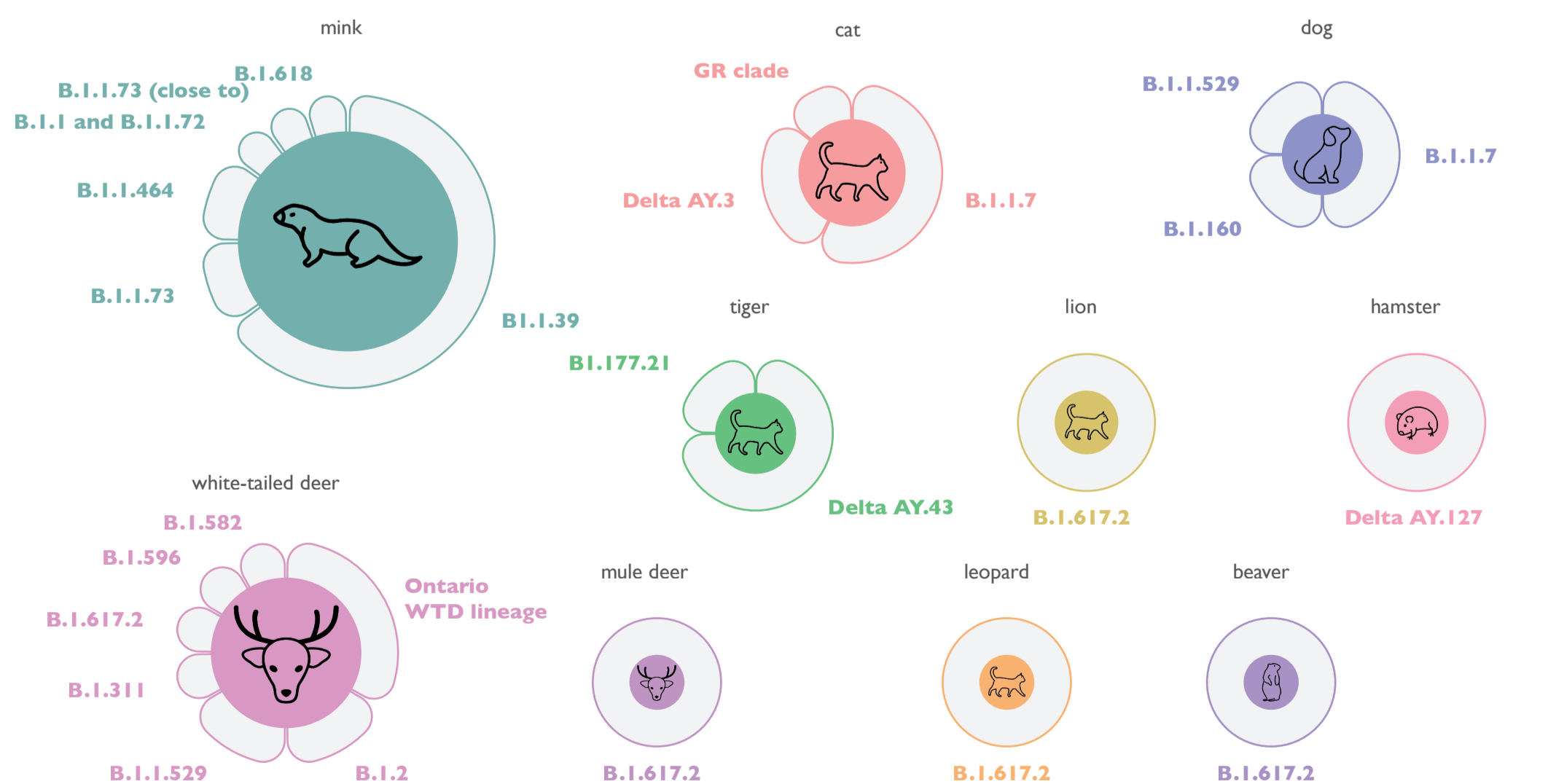
## Control measures & outcomes



## Reported clinical signs



## Reported SARS-CoV-2 variants



vetmeduni



Interactive version  
<https://vis.csh.ac.at/sars-ani/>



SARS-ANI dataset  
<https://github.com/amel-github/sars-ani/>



### Disclaimer

Country names are based on standard ISO 3166-1 alpha-3 country codes. The boundaries and names shown and the designations used on this map do not imply the expression of any opinion whatsoever on the part of the authors concerning the legal status of any country, territory, city, or areas or of its authority, or concerning the delimitation of its frontiers or boundaries. The information displayed on the map is arranged for an optimized visualization and disconnection between the "bubbles" and geographical areas is purely a function of technical and graphical limitations.